



Electrolux Oxygen  
Central Vacuum  
Systems



Electrolux





# Superior performance with cleaner air — built in.

A central vacuum system should be an attractive household appliance designed to fulfill your home's cleaning needs – conveniently and efficiently.

Electrolux central vacuum systems have been designed to fulfill the need for technically advanced products offering sleek design and highly effective performance. It is the built-in home cleaning solution giving you an easier, more enjoyable cleaning experience – with the benefits of a healthier home.

## **Nothing but clean air**

Indoor air quality research shows that with tight insulation and unsatisfactory ventilation and moisture, indoor air is often 2 to 5 times more polluted than outdoor air. Oxygen central vacuums feature a unique double filtration system. First, the GORE-TEX® self-cleaning filter offers worry-free performance and no need to use a paper bag. Secondly, the optional HEPA Allergy Plus filter purifies the air to 99.97% and then diffuses it through our soft air diffusion system eliminating the need to exhaust outside.

## **Intelligent design**

The Oxygen central vacuum system is sleek and quiet, yet robust and powerful. It offers intuitive and convenient product features combined with easy-to-use information displays. The cleaning set is designed for optimal dirt and dust pick-up, yet ergonomic and quiet. For homeowners wanting a clean, healthy home, the Oxygen central vacuum system has been designed with you in mind.

## **Reliability built-in**

The Oxygen central vacuum power unit is placed in a secondary space like a utility room, basement or garage. It is connected to a system of pipes inside the walls of the home. The piping system can be installed either during initial construction or fitted to your existing home. Wall outlets are strategically placed to reach every corner of your home. It's always ready when you need it, just plug in the hose and go.









A woman with long dark hair is sitting on a grey sectional sofa, smiling and holding a white mug. She is wearing a white button-down shirt over a yellow top and dark pants. The sofa has several patterned pillows, including one with a yellow and grey geometric design. In front of her is a glass coffee table with a silver metal frame, holding a silver bowl and a small yellow candle. The background features large windows with white sheer curtains and dark grey curtains with a white geometric pattern. The overall atmosphere is bright and comfortable.

## Breathe easy.

With the power unit located outside of the living space, 100% of all contacted dirt, dust, and allergens are removed from the home, never blowing air back in to the room, unlike conventional portable vacuums. It's also extremely quiet, so vacuuming won't disturb anyone's activities.

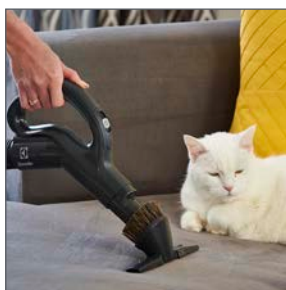




# Convenience and versatility always readily at hand.

All of our household products and appliances share the common Electrolux philosophy – “thinking of you”. We strive to make that extra effort to find out what people really need and want to make their daily lives easier and more enjoyable when using their household appliances.

Our thoughtful approach of studying cleaning habits has brought many innovations to our vacuum systems like the onboard 3-in-1 cleaning tool, ergonomic hose handle with fingertip controls, and combination floor/rug tool.



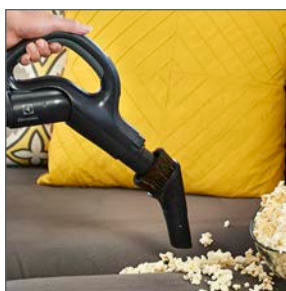
#### **Fabric tool**

The right tool is always at hand with the convenient onboard 3-in-1 cleaning tool, clipped securely to the hose handle. Open the nozzle fully to use as a fabric tool.



#### **Ergonomic handle and fingertip controls**

Resting comfortably in your hand and avoiding wrist strain, easily turn the power unit on/off and control the amount of suction you need for each surface.



#### **Crevice tool**

Close the fabric tool to use as a crevice tool to clean edges, corners and hard to reach places. Close one side for a convenient 45-degree tool when cleaning stair edges.



#### **Combo floor/rug tool**

Change from a hard floor tool to rug tool with a simple click of a foot lever.



#### **Dusting brush**

Insert the closed crevice tool into the nozzle and use as a dusting brush. The soft bristled brush lets you clean any surface without damage.



#### **Built-in manoeuvrability**

Just plug the hose in to the inlet valve in the wall and start vacuuming. It's that easy! The lightweight hose moves easily from room to room without having to drag around a heavy portable vacuum that can damage walls or furniture.



### **A complete cleaning system.**

An Electrolux central vacuum system has a power unit and a cleaning set that work together as a team. The power unit is the heart of the vacuum, providing the power, and is generally located outside of the living space like a garage, basement, or utility room.

Inside the home, the cleaning set is the perfect partner. It's what turns a powerful performance in to a pleasurable experience, with every cleaning tool at hand, ready to clean any type of surface in your home.





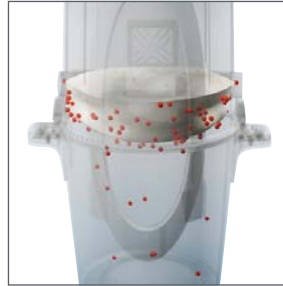
## Design Innovation

At Electrolux, our design philosophy focuses on creating intuitive, innovative features and starts with insights gained through careful investigation of our customer's needs. Our product features are designed to delight and surprise with their intuition and attention to detail.



### LCD display screen

See your system performs. The LCD display on the Oxygen ELUX930 model provides information on your systems performance, maintenance requirements and power level.



### Self-cleaning filter

Our exclusive self cleaning filter with GORE-TEX™ technology filters out 98% of particles, protecting the motor and keeping superior suction over the life of your vacuum. It cleans itself every time your system is turned off, so you never need to buy or change filter bags.



### HEPA Allergy Plus filtration

The optional HEPA Allergy Plus filter for Oxygen models purifies the air to 99.97%, removing any impurities or allergens left after filtration, diffusing it through our soft-air diffusion system before recirculating the air, eliminating the need to exhaust to the outside.



### Integrated silencer

The integrated silencer acts as a muffler keeping the sound of the motor low. At a sound level of 74 dBA, the Electrolux Oxygen is one of the quietest central vacuum systems on the market today.



### Redesigned latches

The newly designed latches on Oxygen models make unlocking and emptying the dirt bucket an easy task. The bucket locks back in to place with a superior seal to make sure the dirt and dust you remove from your home does stay in the bucket.



### Paper bag option

Install the paper bag adaptor in order to use paper bags to keep the inside of your bucket clean and for easy disposal.







# The right power unit is the heart of the vacuum.

We offer three Oxygen Central Vacuum models and a QuietClean metal power unit, varying in features and performance – designed with you in mind.



Model	ELUX930	ELUX920	ELUX910	QuietClean 282
Part Number	004114	004113	004112	006230
Colour	Granite Grey and Ice White	Granite Grey and Ice White	Granite Grey and Ice White	Black
Airwatts	700	675	600	590
Motor	Flow-Thru	Flow-Thru	Flow-Thru	Flow-Thru
Voltage	230V	230V	230V	230V
Watts	1600	1575	1475	1600
Waterlift, mm	3670	3470	3370	2860
Airflow, l/s	54	52	52	55
Information Display	LCD Display Screen	LED Display	On/Off Light	On/Off Switch
Muffler	Integrated Silencer	Integrated Silencer	Integrated Silencer	Serenity Sound-Off
Sound Level, dBA (ASTM F2544-06)	74	74	74	80
Filter	GORE-Tex™ Self Cleaning	GORE-Tex™ Self Cleaning	GORE-Tex™ Self Cleaning	N/A
Capacity	31 Litre	31 Litre	31 Litre	11 Litre Bag
Dirt Receptacle Window	Yes	Yes	Yes	No
Filter Bag Adaptor	Yes	Yes	Yes	Paper Bag
Body Construction	Plastic	Plastic	Plastic	Metal





# Electrolux

Electrolux Central Vacuum Systems  
10200 David Taylor Drive  
Charlotte, NC 28262  
USA  
[www.electroluxcentralvac.com](http://www.electroluxcentralvac.com)

Distributed by:

